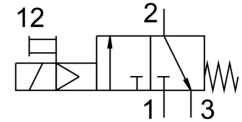


Shut off valve MS9-EE-NG-V24-S-VS

Part number: 562946

FESTO



Data sheet

Feature	Value
Series	MS
Size	9
Width dimension	90 mm
Type code	MS9-EE
Structural design	Piston gate valve
Actuation type	Electrical
Sealing principle	Soft
Exhaust air function	Without flow control option
Manual override	Detenting Non-detenting
Reset method	Mechanical spring
Type of control	Pilot-controlled
Symbol	00991008
Valve function	3/2, closed, monostable
Operating pressure	3.5 bar ... 16 bar
Standard nominal flow rate	18000 l/min
Standard nominal flow rate 2-3	14100 l/min
Duty cycle	100%
Coil characteristics	24 V DC: 4.5 W
Operating medium	Compressed air as per ISO 8573-1:2010 [7:4:4]
Information on operating and pilot media	Operation with oil lubrication possible (required for further use)
Corrosion resistance class (CRC)	2 - Moderate corrosion stress
Note on materials	RoHS-compliant
Temperature of medium	-10 °C ... 60 °C
Noise level	93 dB(A)
Degree of protection	IP65
Ambient temperature	-10 °C ... 60 °C
Type of mounting	Optionally: Line installation With accessories
Mounting position	Any
Product weight	2300 g
Pneumatic connection 3	G1
Electrical connection	Form A Plug as per DIN EN 175301-803 Rectangular design

Feature	Value
Piston slide material	POM
Seals material	NBR
Housing material	Die-cast aluminum